

## Transformer station type ST-T1/URB

rated power 63kVA

for rated upper voltage 400 V



The transformer station type ST-T1/URB is a device designed for use on the ground with no explosion hazard. The transformer station ST-T1/URB is equipped with a power protections against short-circuits, overloads and lowered insulation resistance with installed transformer of rated power 63 kVA and upper rated voltage 400V.

### TECHNICAL DATA:

ingress protection	IP54
station rated power	63 kVA
station upper voltage rated power	400 V
station lower rated voltage	500 V
frequency	50 Hz
no of phases	3
rated current of station upper/lower side	91/73 A
no of 500 V outlet by lower side	1
dimensions	1200 x 900 x 900 mm (height x width x length)
weight	950 kg

## CONSTRUCTION

The ST station housing is made of steel sheets and steel profiles. It is of a modular design and comprises of the following parts:

- chamber 400 V and 500V,
- the transformer chamber ( with dry-type transformer).

## DESCRIPTION OF OPERATION

Control of breaker 400 and 500 V is carried out manually by levers drive on the face of station. Turning-on of breaker Q is carried out by switching over his lever in „ON”, position, however turning-off by switching off the lever „OFF” position. Pushing the emergency button causes turning-off Q circuit breaker.

## SCHEMATIC DIAGRAM

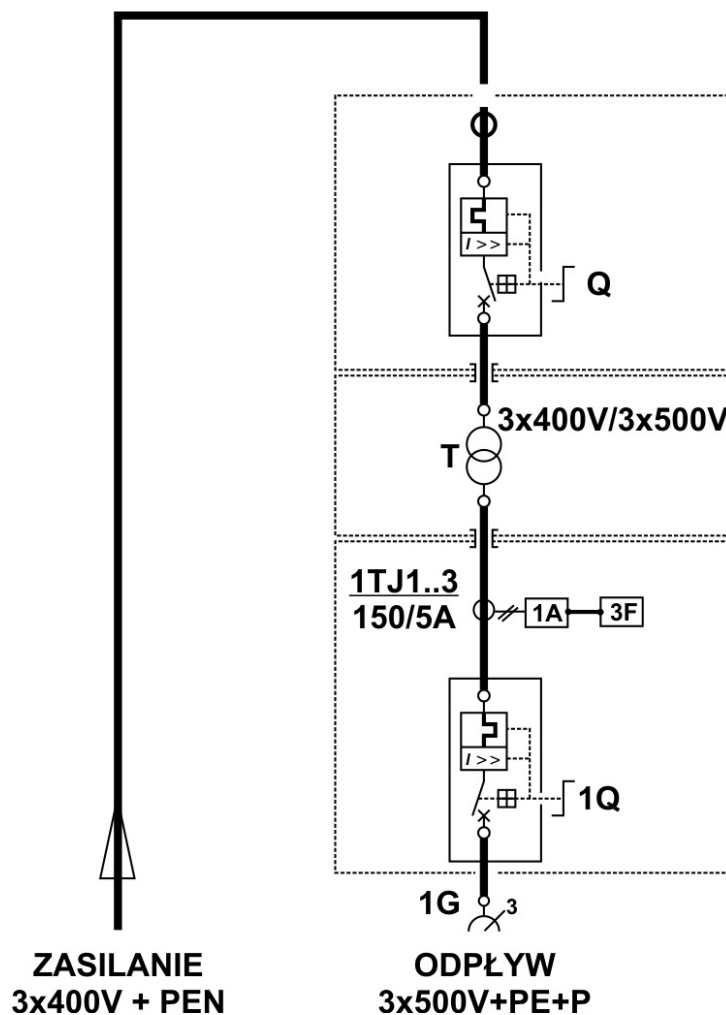
### Legend:

Zasilanie – supply

Odpływ – outlet

Q, 1Q – circuit breaker

T – dry transformer



Orders should be made in writing or by fax to the address: